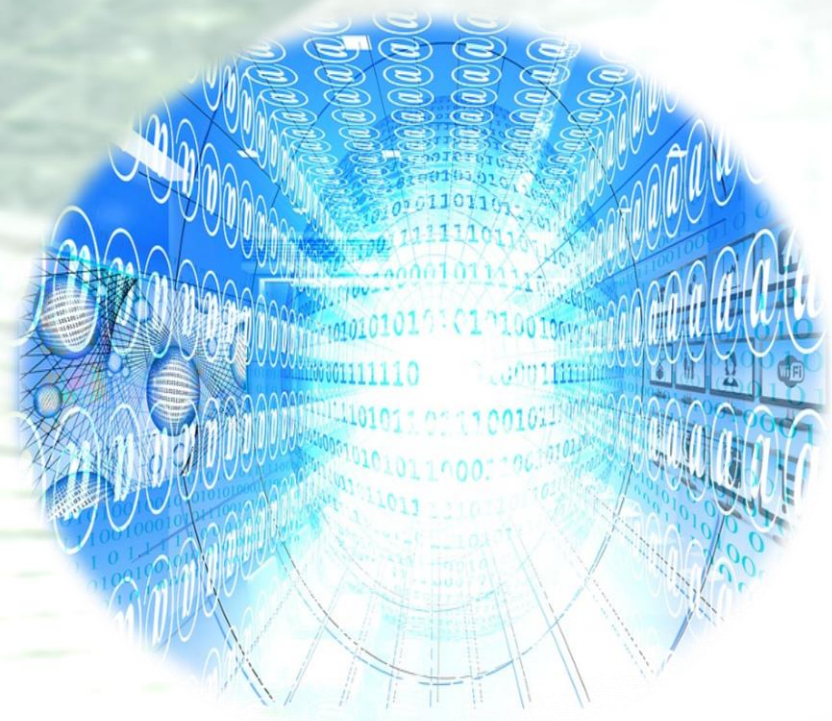


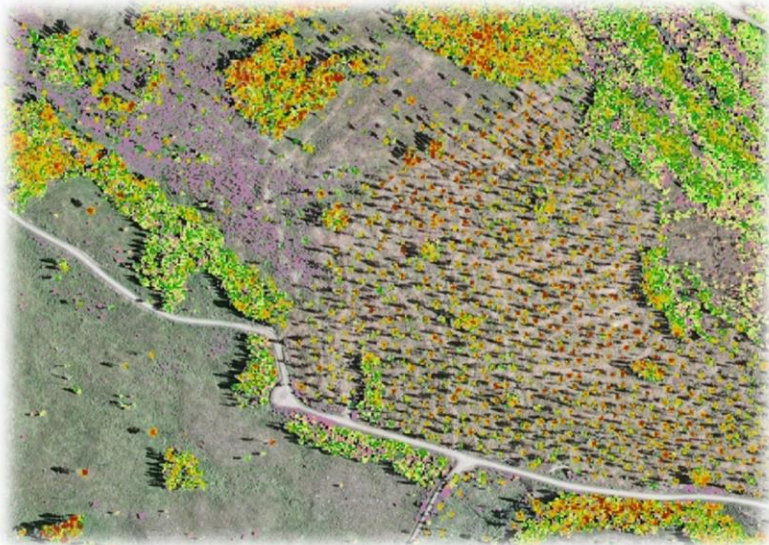
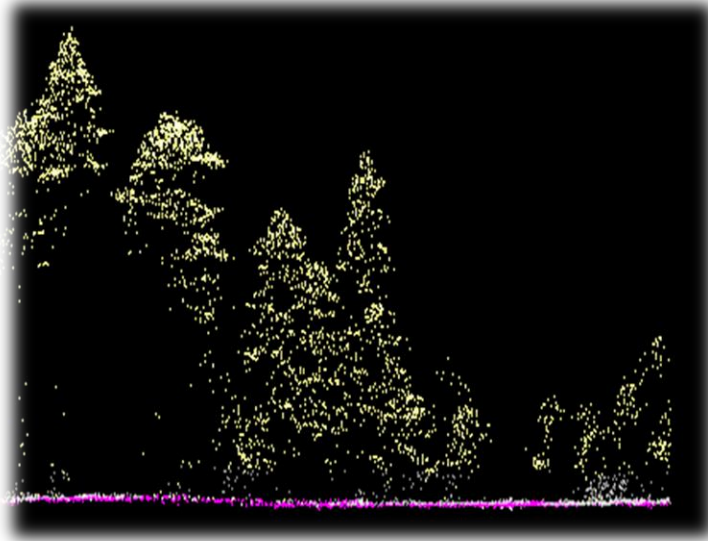
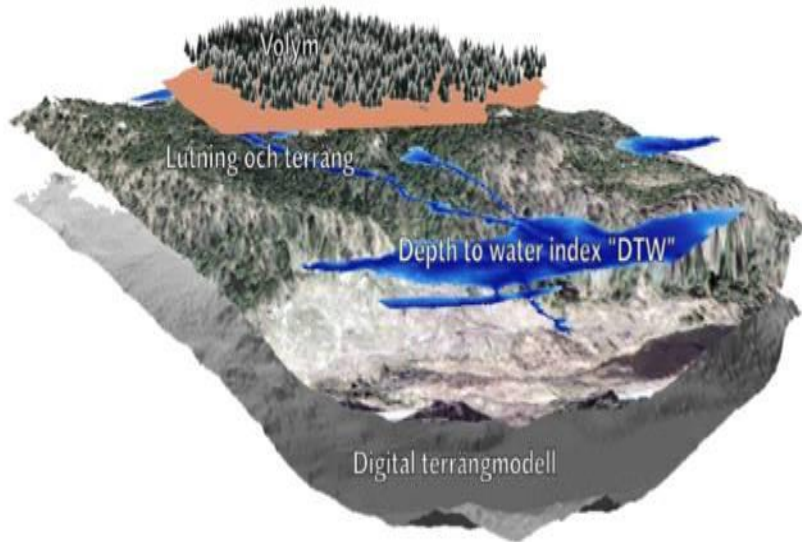
Skogens Digitala Kedja

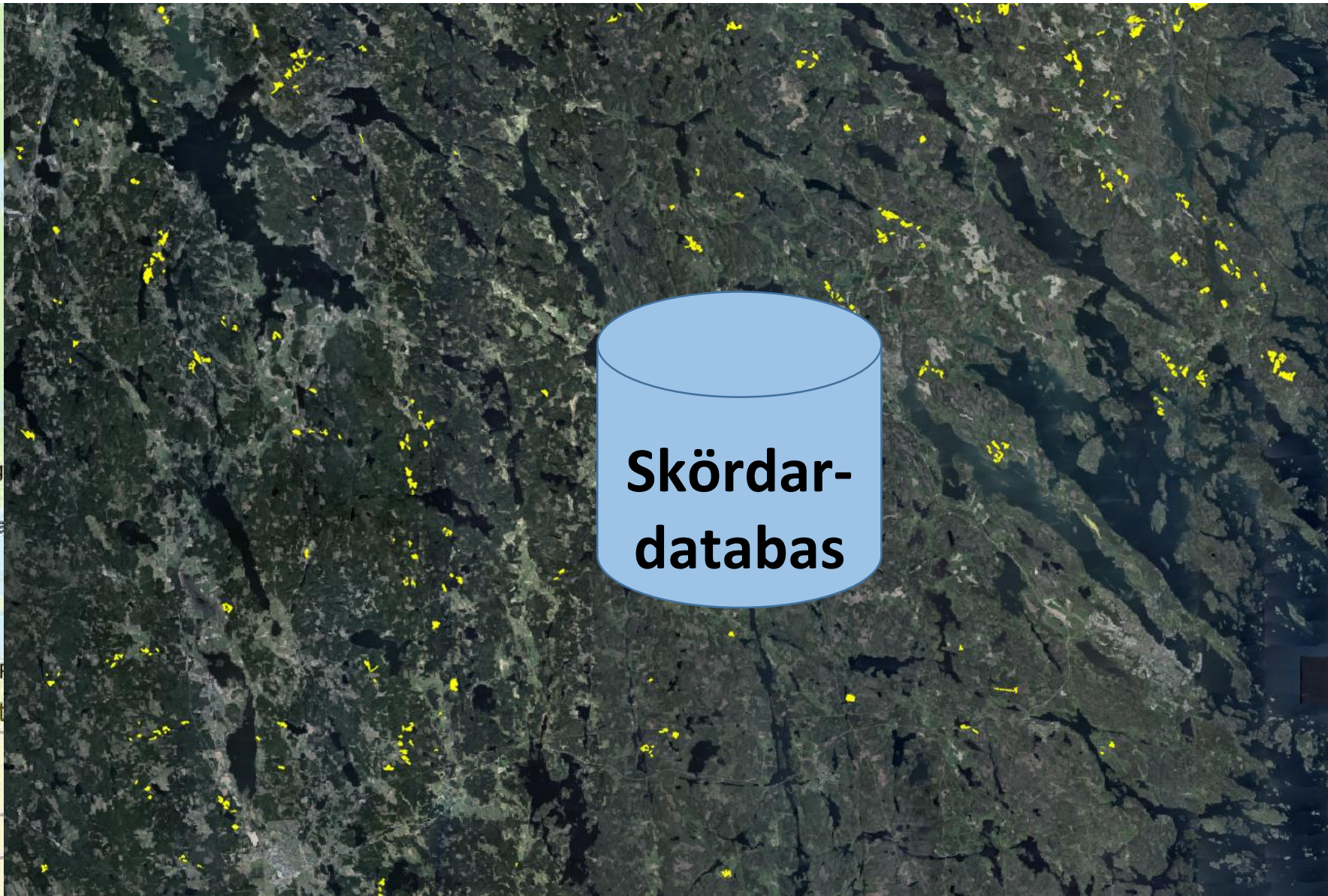
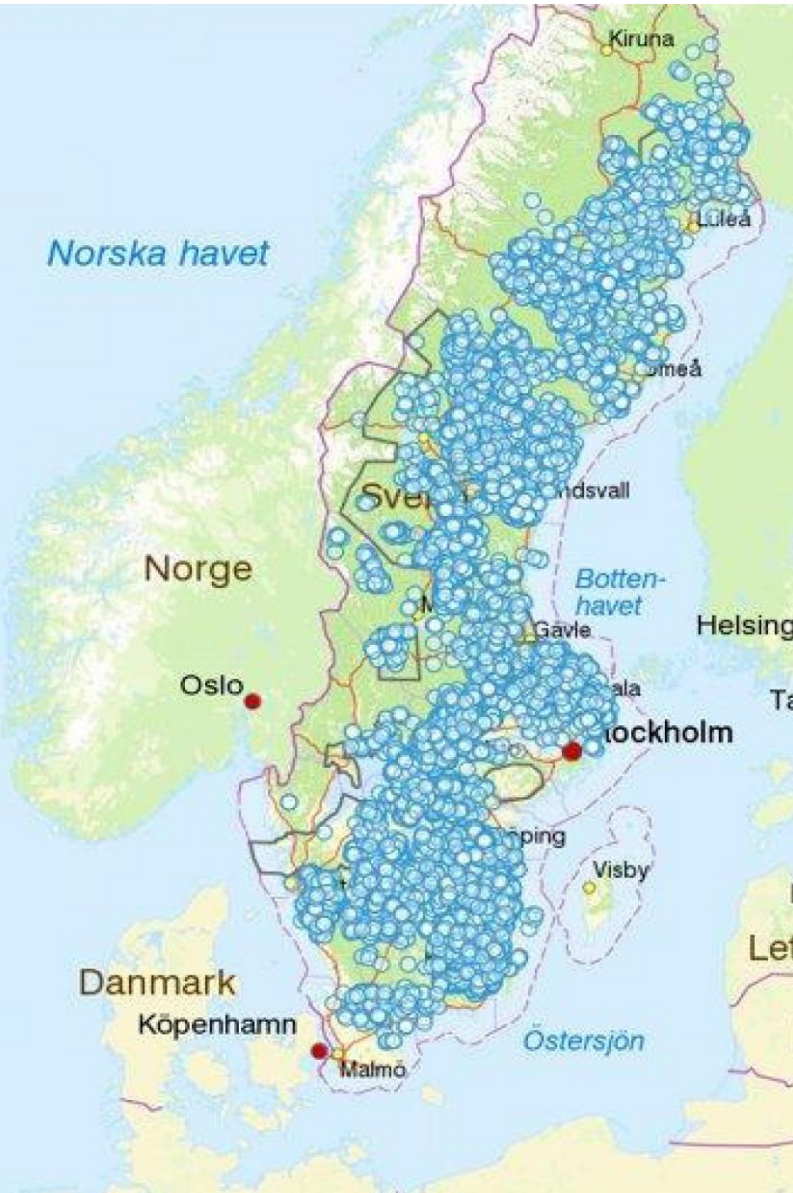


Mia Iwarsson Wide

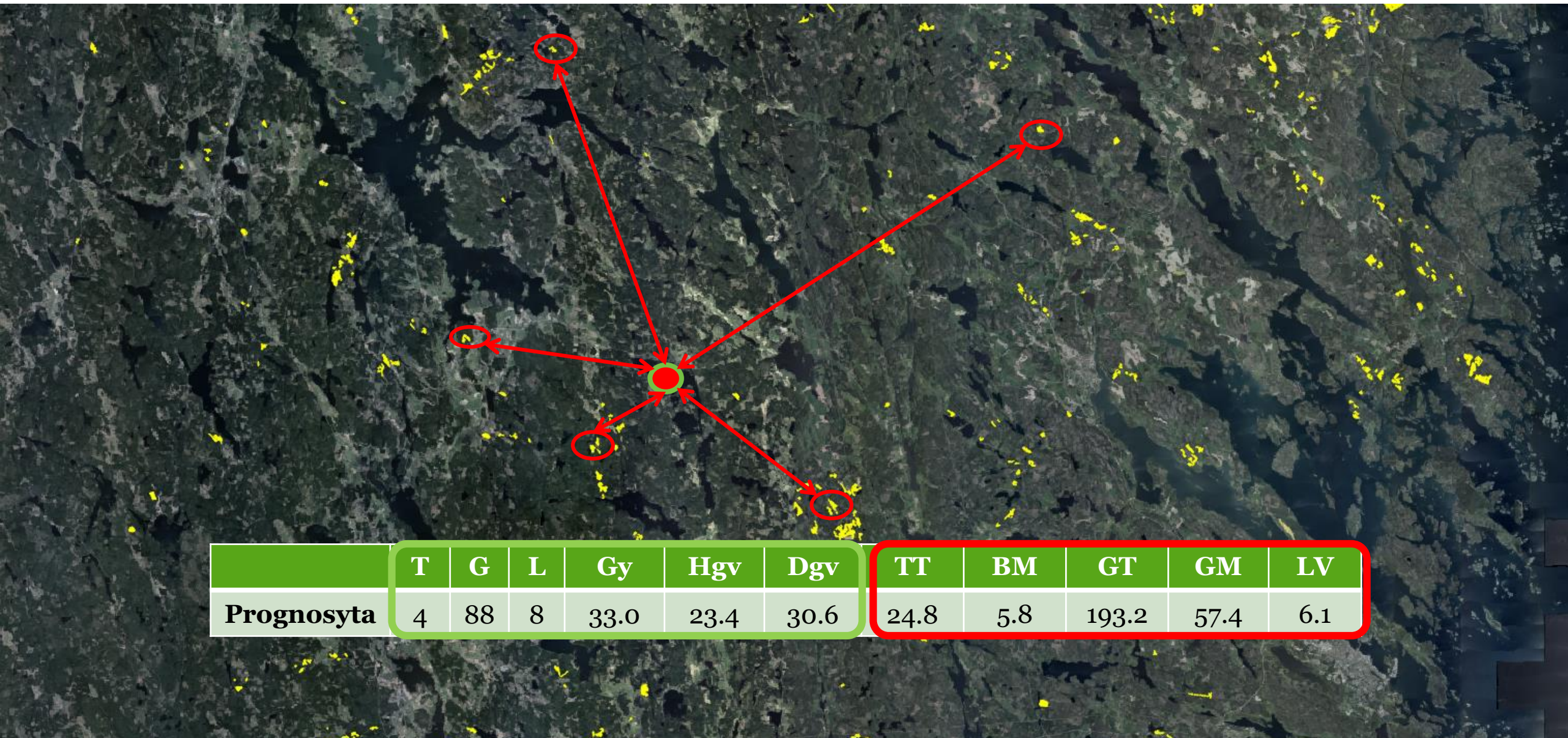
VIRKESFORUM 20180912



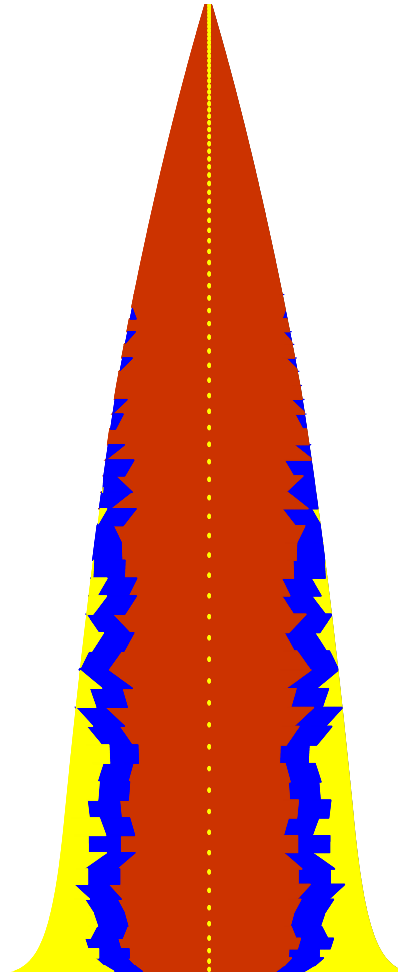
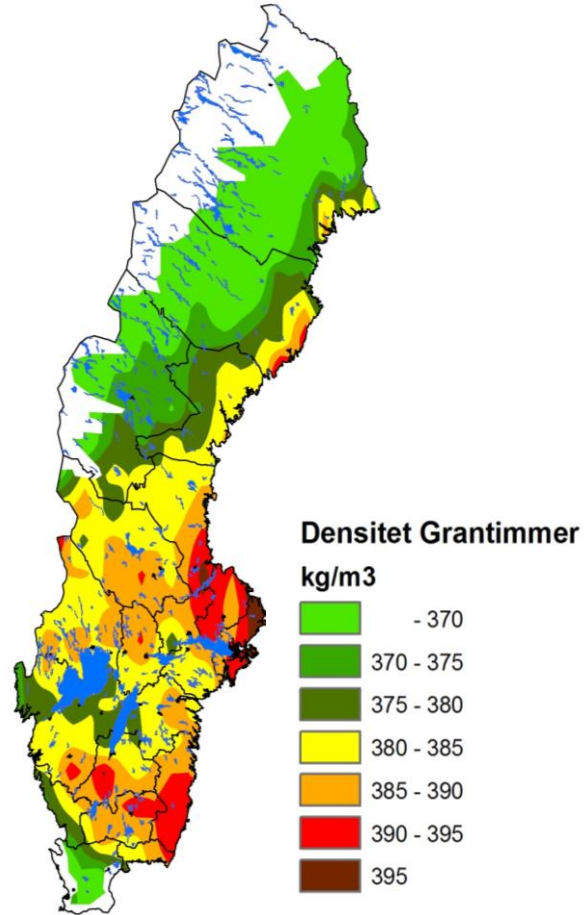
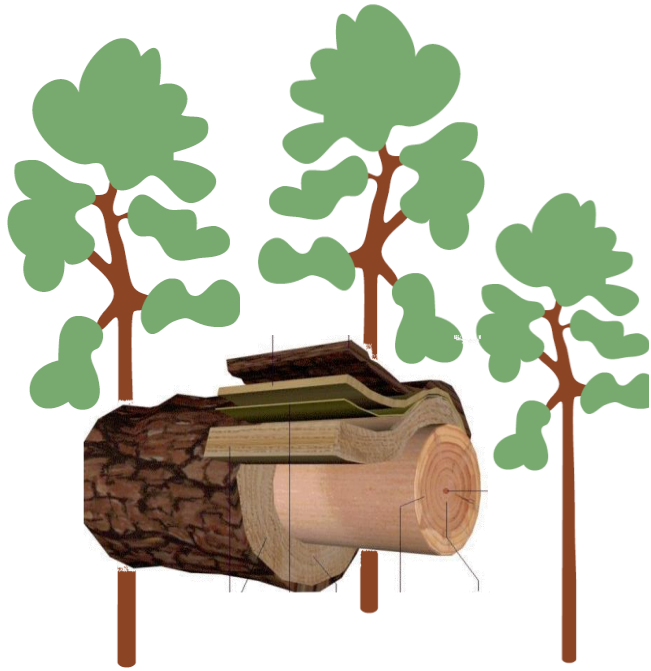


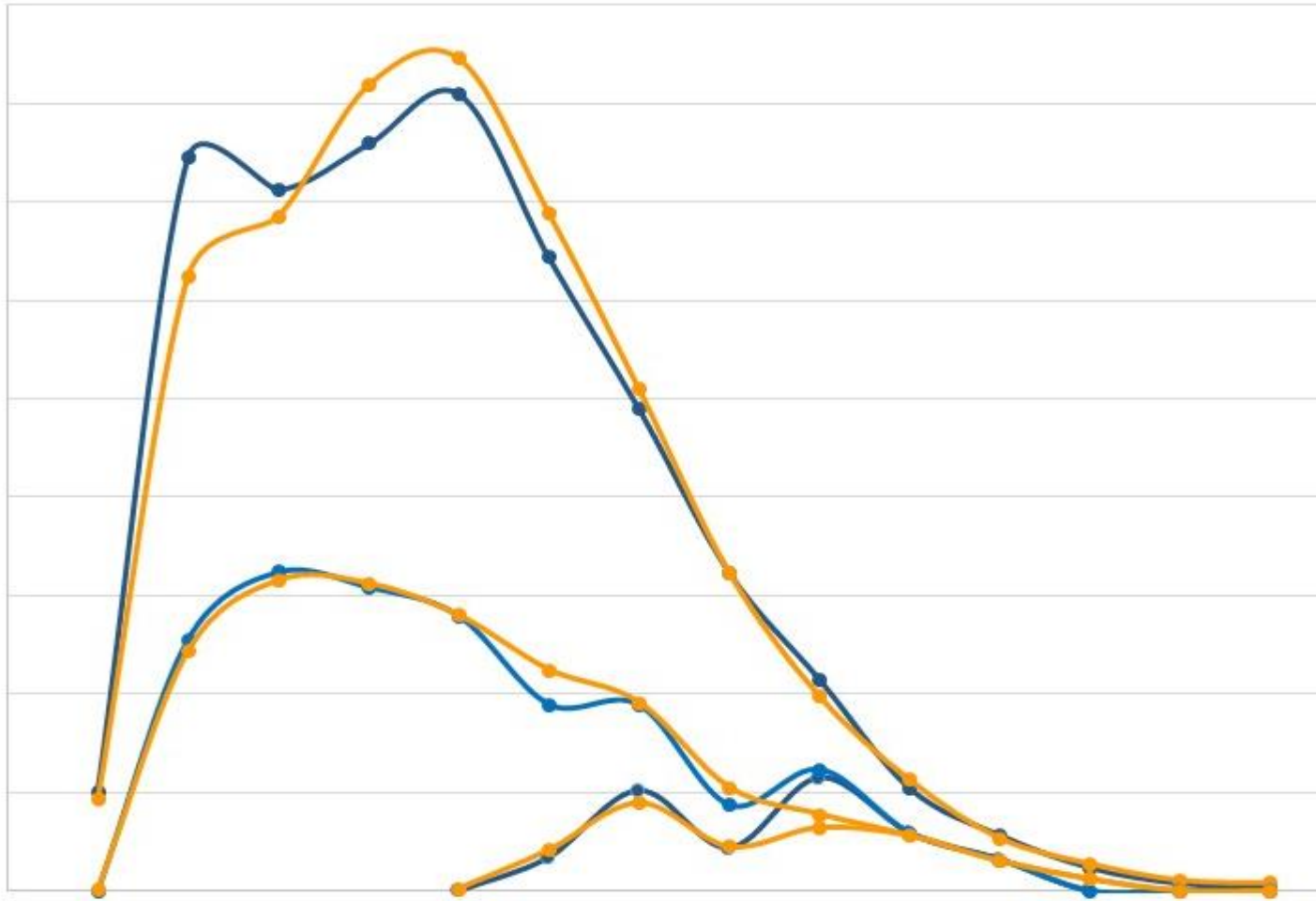


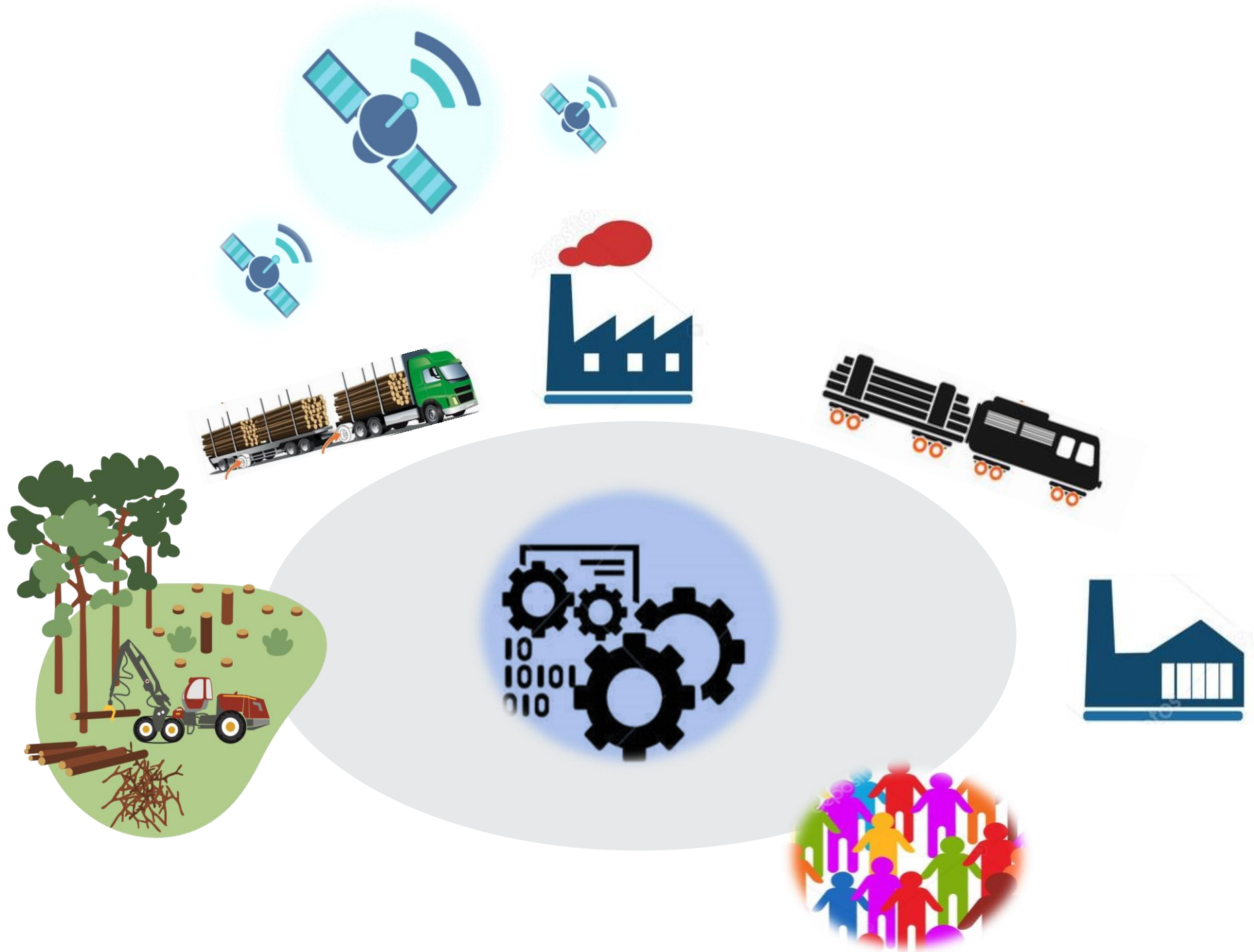
**Skördar-
databas**

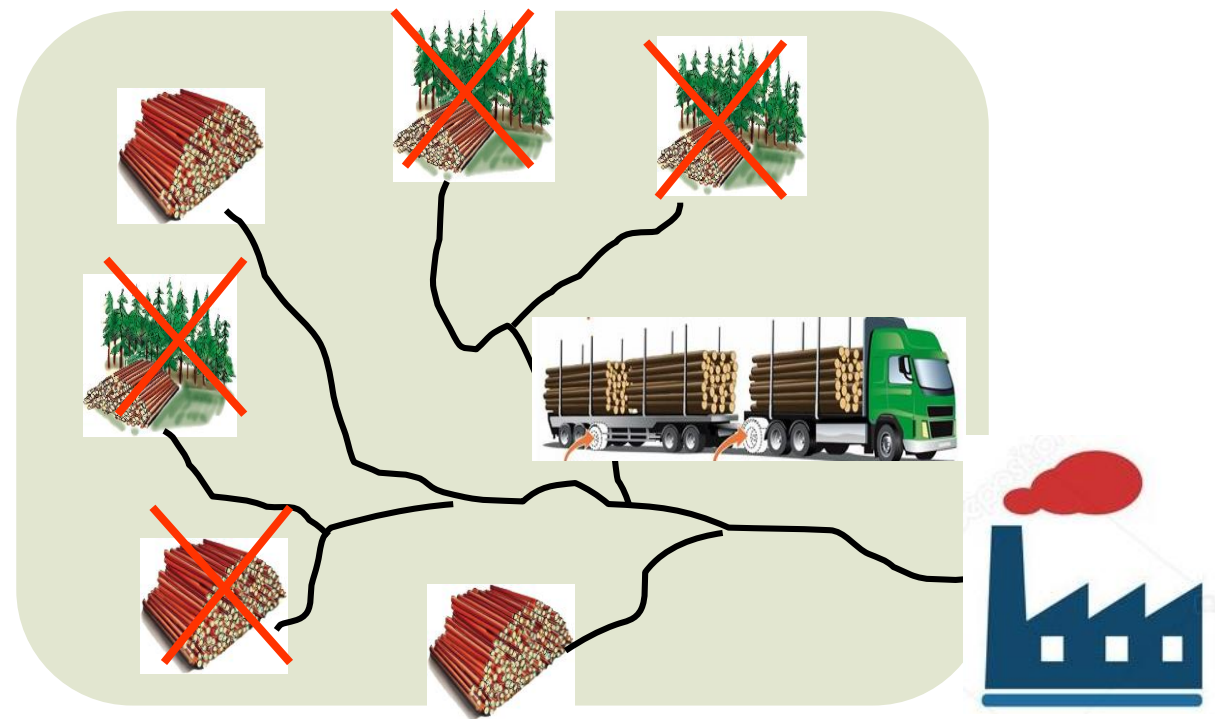
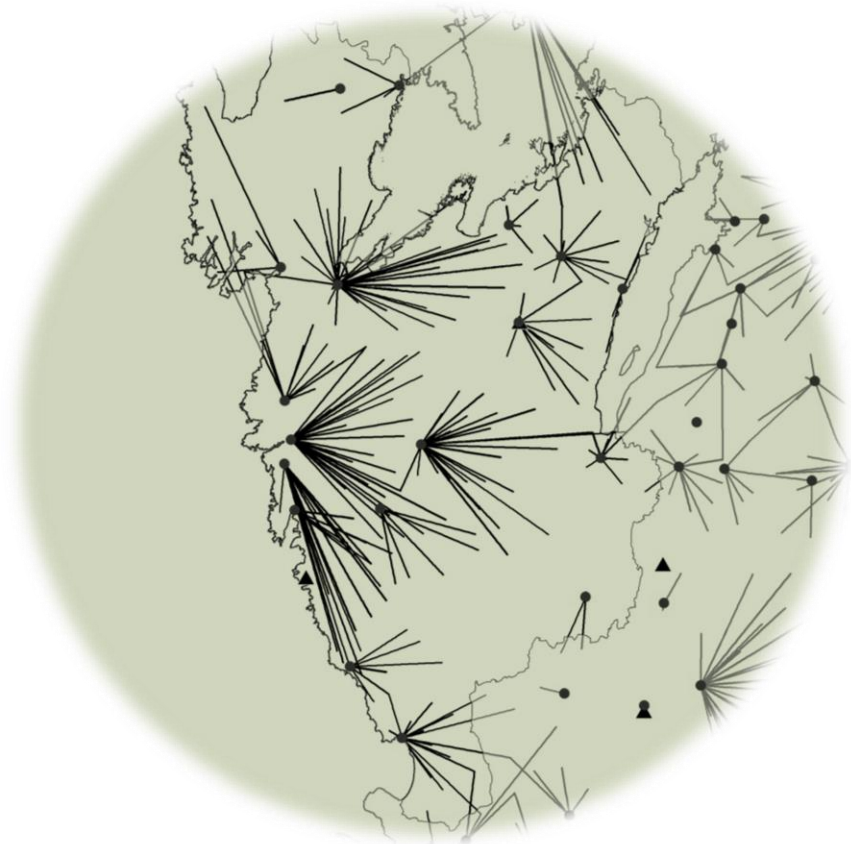


	T	G	L	Gy	Hgv	Dgv	TT	BM	GT	GM	LV
Prognosyta	4	88	8	33.0	23.4	30.6	24.8	5.8	193.2	57.4	6.1











WÄRME AB

I mars vi ha 1 750 MWh av TRB-8 och 1 350 MWh av TRB-13.

1 750 MWh TRB-8 fixar vi, men bara 900 MWh av TRB-13. Kan ni ta 450 MWh TRB-11 istället?



FLISEN

BAS- produkt sönderdelat	Fukthalt (%)	Askhalt (%)	Fraktions -klass	Fin- fration (%)
TRB-8	M45+	A1.0	P45	F15
TRB-13	M45+	A3.0	P45	F15



SKOG AB



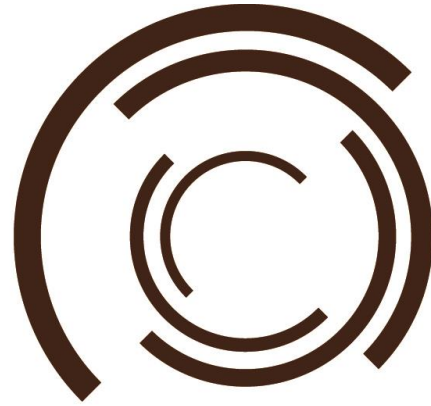
Hållbarhet

Ekonomisk

Social

Ekologisk





skogforsk

skogforsk@skogforsk.se

018-18 85 00