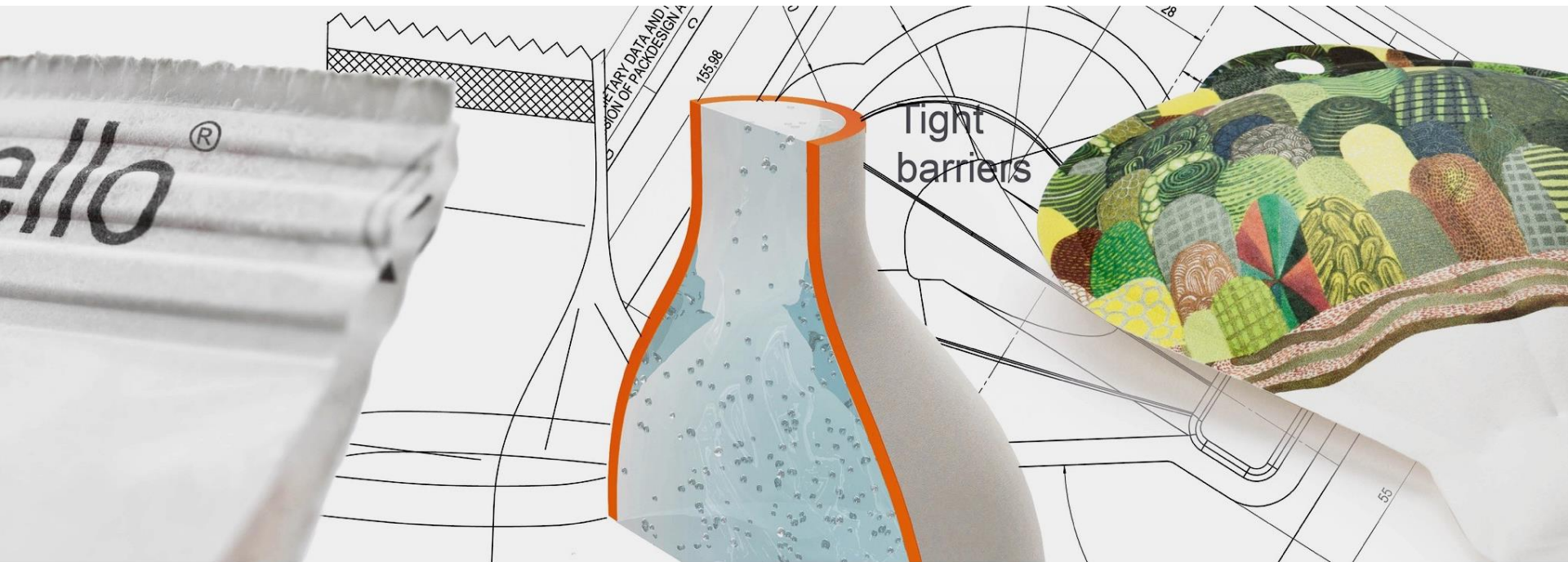




BILLERUDKORSNÄS



Användning av forskning i BillerudKorsnäs

En dag för skogsnäringens forskningsagenda, 10 jan 2018

Magnus Wikström, CTO

BillerudKorsnäs in figures

Net sales approx.

22

Billion SEK

Operating profit approx.

2

Billion SEK

Production units

8

Beetham
Frövi
Rockhammar
Gruvön
Gävle
Karlsborg
Pietarsaari
Skärblacka

Business areas

38%

Packaging Paper
Share of net sales

37%

Consumer Board
Share of net sales

4 300

Number of employees

17%

Corrugated Solutions
Share of net sales

We challenge conventional packaging for a sustainable future

The purpose of our business



FIBREFORM®

Innovation for sustainable solutions

There are many areas for innovation -
we are primarily focus on two areas

- 1 Business innovation
 - > Solutions in business areas
 - > Ventures

- 2 Product innovation
 - > More radical steps in product development
 - > Advanced material research

MANAGED PACKAGING

Generates value for global brands



Award winner in:



Lafarge Global
Supplier Awards
2014



Pulp and Paper
International
Award 2015

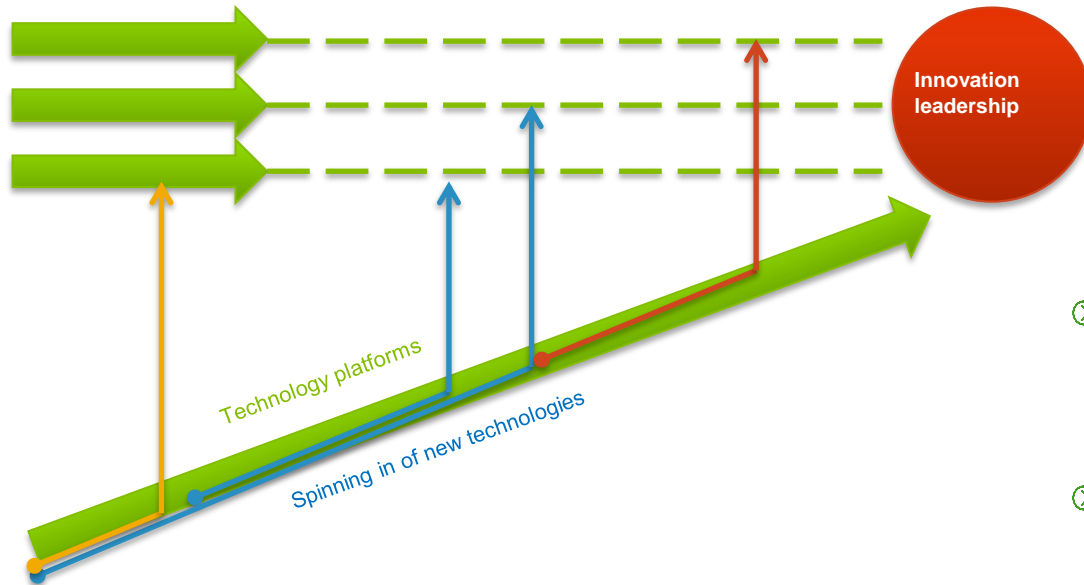
A proven track record for innovation

New products give margin improvements



We do invest more in radical material development

Product development in product roadmaps



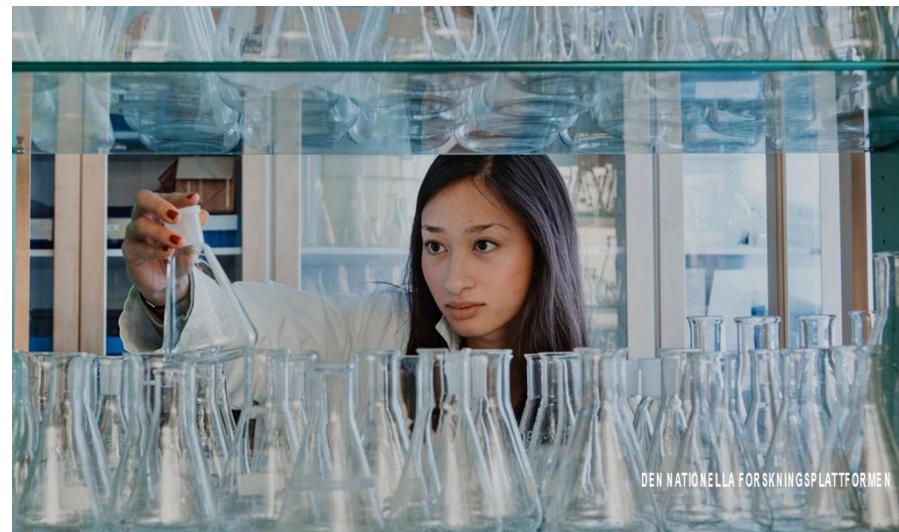
- ④ Technology platforms, e.g.
 - > Microfibrillar cellulose, 3D formability, barriers, embedded functionalities
- ④ On-going actions
 - > Enhancing internal expertise
 - > More capacity to run parallel tracks
 - > More advanced labs
 - > Intensified external R&D interaction

Enhancing external R&D

We aim to actively design and enhance external R&D network

Target outcome

- ⌚ Research breakthroughs that contribute to our innovations
 - ⌚ Improved recruitment base
 - ⌚ Obtain a more focusses and strategic collaboration with governmental funding authorities
 - ⌚ A hub for more global scientific interaction
- ! TREESEARCH platform is a top priority for us



We need to set bold research targets for our industry

A strong research environment was a part of taking Swedish forest industry to top position



*Forskning och utveckling inom Billerud
från slutet av 1950-talet och 25 år framåt
– en dokumentation av sexton Billerudsforskare
sammansatt av Brita Swan*



Implemented R&D work, examples:

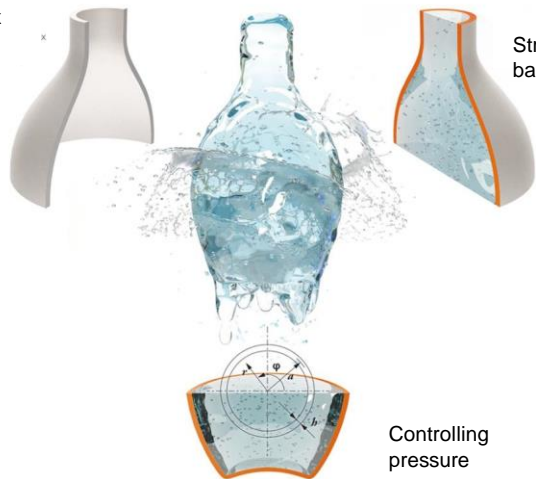
- ④ Eucalyptus pulp
- ④ CTMP for fluff and LPB
- ④ Duplex and triplex LPB
- ④ Continuous kraft pulping
- ④ Digital process and production control

Investing in challenger projects

A way to push ourselves even further

Paper bottle for carbonated drinks

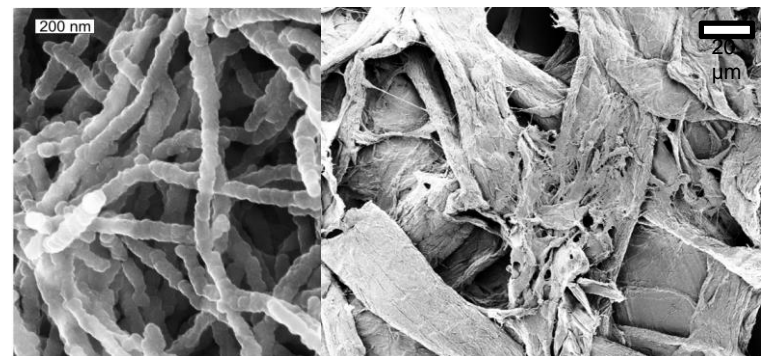
Complex shapes



Strong barriers

Controlling pressure

Paper battery



Wood fibers covered with conducting polymers



Movie is available on the web, please click on this link:

<https://www.billerudkorsnas.com/about-us/billerudkorsnas-stories/all/the-paper-bottle--if-we-can-dream-it-we-can-make-it>



BILLERUDKORSNÄS

We challenge conventional packaging
for a sustainable future



<https://www.billerudkorsnas.com/about-us/billerudkorsnas-stories/all/the-paper-bottle--if-we-can-dream-it-we-can-make-it>

See more on: [challengeconventional.com](https://www.challengeconventional.com)